



Leaders and Wheelers

Another Summer of uncertain weather, sadly. But drivers are hardy people and so far everyone seems to be having fun. We are moving into an age of increasing regulation and the need for more examinations. So I would like to draw your attention to some new club rules applicable to Las Caravanistas in particular:

Have a practice run with your new towable tupperware box before you expose yourself to the public gaze.

Always enlist the aid of the erections committee, assuming you have an awning.

Please switch your gas off in your caravan *before* you go driving (eggs or no eggs).

Return your water barrel to your caravan *before* you get half soaped in the shower and run out of water.

Take a lighter for the outdoor gas ring and don't try to rely on matches in a gale.

Do not balance your tea cup on a loose manhole cover at Great Massingham and then stand on the other end of it.

Refer to your friends as cartoon characters at home and then forget you are somewhere else.

These simple steps will reduce our hilarity at one another's expense immensely.

(The editorial staff is open to bribes.)



30th March - Easton Farm Park in Suffolk.

Sixteen Turnouts attended the Drive from Easton Farm Park. Hat Gloves and Apron was the dress code for the day. We set off at intervals in small groups. The 10 mile drive went through the Suffolk Villages of Hoo and Monewden, then on to Charsfield with a stop at the Three Horse-shoes Public House.

Howard and Margaret with Bessie, Ben and Davida with Charlie and Wally and Eunice with Winston represented CWSDC..

After a threatening beginning, it was a glorious Spring Day attracting BDS members from both extremes of the area, those from Cambridge thought the route was hilly. Hills in Suffolk? Yes there are a few! Villages were out in their gardens to see us go by. The route was a trial run for a drive to be held on 21st September 2008 when we hope to have as many "Traditional Vehicles" as possible and encourage villagers to meet us at the Three Horse-shoes Pub in Charsfield.

There will be a cones course back at Easton Farm Park and a Communal Bring & Share Picnic. So why not put some diesel in the tank and join us. E B.



18th May – BDS East Anglia Area Show

Well done to our members who took part in this exciting show. I apologise for the over enthusiasm of the Organiser, Judges and Stewards for being so on time we were ahead of ourselves. Better than keeping you all waiting, I suppose.

It was great to have some of the top drivers around to show us how it should be done and what can be achieved. 75 entries forward for 16 classes and 3 championships. The essence of the day was sportsmanship and the thrill of the competition and sometimes surprising results. I would like to thank the judges Derek and Sharon Wootton for judging what they saw on the day and their helpful comments to the less experienced. Caroline Donsworth's eye for Concours d'Elegance meant entries down the line were appreciated for their turnout even if they did not quite meet the Judge's criteria.

Eighteen BDS Area 24 members entered the show, 6 in Private Driving (Traditional Vehicles) and 12 with Exercise Vehicles.

Sallie Walrond won the Mountain & Moorland class with Kelly put to her lovely Skeleton Gig. Sallie also won the Style and Performance showing the usual dedication to her sport and qualifying for the 2008 Championship at The Drivers Dream Show at Biggleswade on 23rd August.

In the Pleasure Driving, Clare Iveagh came 3rd in 13.2hh and under with Ronnie and 5th in the over 13.2hh with Sporty. (Porter in origin)

Claire Bourne was driving Robert Clifton Brown's pair of Hungarian grey horses Ignac and Clikros in the 4 wheel exercise class coming 7th in a very strong class.

Ben and Davida helped Wally and Eunice set up on Friday and also worked very hard on Sunday administering to the needs of the Judges and Stewards.

We had many spectators, friends and family enjoying the competition among the drivers and cheering on their favourites. It was a good day out! E B.

BOXWORTH DRIVE

SUNDAY 26th APRIL 2008

"It was a wild and stormy night....."

Well, actually that wasn't quite true. Saturday had been a beautiful, warm, sunny, slightly breezy day; a perfect day for a drive. Sadly, Sunday wasn't. It was overcast and 'threatening'.

Ten sets of folk arrived at Pages Farm, sorted themselves out and set off in one's and two's (optimists in sweaters, pessimists in sou'westers). By the time the last turn-out had left, the gentle breeze had turned into a brisk wind and was accompanied by horizontal rain! Fortunately, after about half an hour, the rain abated and, with one or two exceptions, most folk stayed relatively dry.

The drive took us through the Boxworth Farms and Lolworth; along the pretty green lane overhung with blackthorn blossom and on to the Childerly Estate. For about eight miles, the route followed broad field margins and farm tracks. It took us past cowslip covered ditches, through beautiful bluebell woods (the sharp-eyed spotted rare ox-lips in Knapwell Wood) and around bits of gently undulating Cambridgeshire.

Lunch was taken back at Pages Farm, where people, ponies, horses and sheep 'safely grazed'; wrung out damp clothes and consumed quantities of calorific cake.

Our thanks go to the farmers and landowners south of the A14 and north of the A428 who allowed us to drive around this traffic-free, quiet corner of Cambridgeshire.

Dramatis personae:

Mouse and her Mum with Jake

Eunice and Wally with Winston

Liz and Terence with Sylvie

Richard and Judith with Sonny

Jeff and Gwen with Comet

Ray and Linda with Milly

Maureen and Angela with Cassie (or was it Carrie?)

Howard and Margaret with Bess

Ian and Sandy with Dan

Anna and Robin with their pair of Shetlands



sdc

!!NEW WEBSITE!!

The Committee would like to thank David Jones very much for his kind offer to run the club website for us.

This will be an invaluable asset. Please use it for all your photos and news. David would love to hear from you. The address is www.cwsdc.org.uk or cwsdc@btinternet.com

The newsletter will be on this site in future. If you will continue to need a paper copy please let me know on tel. 01284769772.

Stetchworth Ley 25th May 2008

Well I suppose *we should have known* better than to agree to hold a drive any where near a bank holiday !!! The week before forecast dry weather for that weekend so I lived in hope of a good day. By Wednesday it said possible showers and by Saturday rain.

It gave a tentative shower while delivering papers at 5-30 am but kept its best for later. Seven brave turnouts arrived and six of them set off on my shorter route. Terence having misplaced a vital piece of harness and Sandy deciding wet or cold but not both together was the order of her day. Danny was tethered on some grass in a rug and Terence and Ian made one set of harness out of their two and braved the weather while Liz was happy to keep Sandy company. Soon after the first ones had left the heavens had opened so we decided to do a 7 mile loop and then return to the farm for a drying out session and food.

I caught up with the first turnout to leave at the first assisted road crossing and redirected them. Then John came to say one turnout had disappeared. He stayed to see the rest across while I returned to the farm explaining to the other drivers I meet on the way what had been decided, all agreeing it was the best thing to do. I phoned the missing driver and found she had left with only the long route instructions so went that way. I managed to redirect her and so she did a 7 mile loop in the opposite direction. Luckily all managed to return safely if somewhat drenched. Liz and Sandy put out the tea and cut up cakes so all was ready when the soggy bods arrived. After the ponies had been dried and put under cover with hay nets lunch /tea was had in the barn where tea, coffee or chocolate was on offer to warm cold fingers and thaw cold bodies. Shirley came and joined in for lunch as her church fete was being held at the same time and even she cannot be in two places at once.

Many thanks to those brave souls who came.

They were

Eunice and Wally with Winston

Gwen and Geoff with Comet

Sandy and Ian with Danny

Mouse with Jake

Maureen and Angela with Carrie

Liz and Terence with Pebbles

Rosemary with Ringstead Yasmin☺.

We have the same venue for next year so if you would like to join us next year (not a bank holiday) day and it can be scheduled in please do come and if we all pray for a better day you never know we might get it.

Gil Daly and John Lynn

EXAMINATION RESULTS

The Club would like to congratulate Brent Reeder on passing all the modules for the BDS Intermediate Examination.

Well Done! Well Done! Well Done! Well Done! Well Done!

Know Your Horses

Mystery Objects

These are all photos of objects that you use in driving taken from odd angles - what are they?

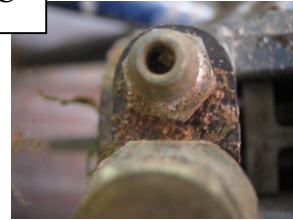
A



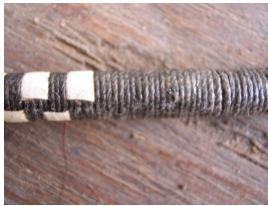
B



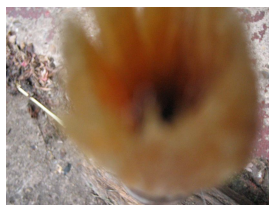
C



D



E



F



G



H



I



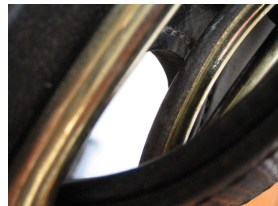
J



K



L



Club Training Day At Worlington Saturday 10th May
Shirley Reeder

Nine turnouts came to Worlington – the weather was lovely –hot and sunny! We began in the new coach house to discuss the day’s programme –concentrating the morning on the BDS Road Driving Test.

After being harness checked by Sallie members braved the village High Street accompanied by Brent or Shirley. The traffic was constant-mostly cars with a few lorries. There were several road junctions to negotiate and a round-about had been made on the top courtyard of the farm.

Driving on our busy roads-when you must-needs confidence, skill and especially a sensible well trained pony. Having to hold the reins “coachman style” proved a novelty and a challenge for some!!

There was a cones course to practise on –kindly timed by Barry Southwold. A dressage arena on the moat field was presided over by Sallie who helped members with any problems they had.

Lunch outside under some trees was an enjoyable experience. After lunch we discussed the road test and decided to apply for one in the near future at Worlington. Robert Clifton-Brown with Claire Bourne and a pair of greys were welcomed for a “socialising” section.

Thank –you :- Sallie, Brent, Barry, and Diana for all your help.

Those present; Mouse, Wally and Eunice, Sandy and Ian, Judith and *Richard*, Kathy and Jeff, Rosemary and John, Pam Dixon, Helen Seymore, Robert and Claire.

I felt that members gained knowledge of what is required for the test and confidence in their ability to cope with it. We hope to have a test here in the first week in July. Please ring me.

CLUB NEWS

New categories of membership and increased fees are being considered.
Associate, non-driving members will be invited to join at the committee’s discretion.
Junior whips of <10 years old £10.
Single adult driving membership £18.
Couples or family membership (i.e. driver and groom and family) £25.
Non-driving associate member £10.

Why do we have to pay for some drives?

The Forestry Commission charges £52 minimum fee for an organised one day drive in the Forest, or £6.80 per carriage (whichever is the greater).

Private membership is £61.28 +VAT for 12 months per turnout,

£45.96	“	9	“
£30.64	“	6	“
£15.32	“	3	“